



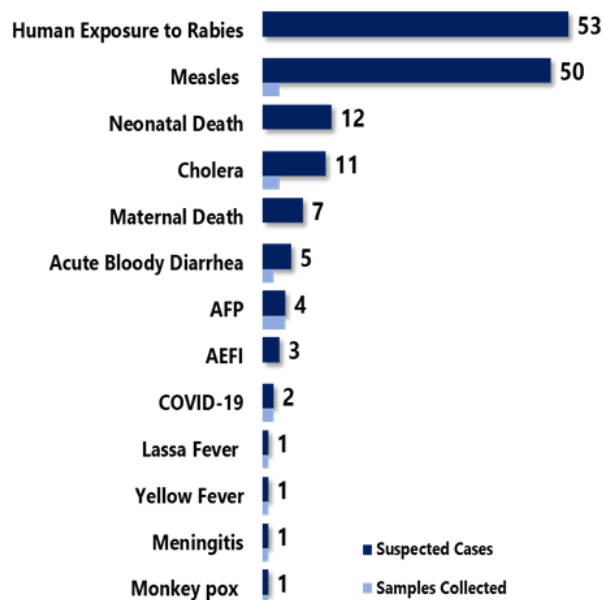
Liberia IDSR Epidemiology Bulletin

Epi-week 47 (November 21-27, 2022)

Country Population: 5,104,413 | Volume 17 Issue 47 | November 21– 27, 2022 | Data Source: CSOs from 15 Counties and Laboratory

Highlights

Figure 1: Public Health Events Reported



Keynotes and Events of Public Health Significance

- ♦ **A total of 151 events** of public health importance including **19 deaths** were reported
- ♦ **Completeness and timeliness** of health facility reports were both **100%**
- ♦ **Ongoing Lassa fever** outbreak in **4** Counties
- ♦ **Ongoing Measles** outbreak in **13** Counties
- ♦ **Two new confirmed COVID-19 cases** were reported from **1** County

*Adverse Events Following Immunization/Adverse Drug Reaction

Reporting Coverage

Table 1: Health Facility Weekly IDSR Reporting Coverage, Liberia, Epi-week 47, 2022

County	Expected Reports From HF*	Reports Received	Received on Time	Completeness (%)	Timeliness (%)
Bomi	26	26	26	100	100
Bong	57	57	57	100	100
Gbarpolu	16	16	16	100	100
Grand Bassa	36	36	36	100	100
Grand Cape Mount	34	34	34	100	100
Grand Gedeh	24	24	24	100	100
Grand Kru	23	23	23	100	100
Lofa	66	66	66	100	100
Margibi	68	68	68	100	100
Maryland	27	27	27	100	100
Montserrado	326	326	326	100	100
Nimba	88	88	88	100	100
Rivercess	21	21	21	100	100
River Gee	20	20	20	100	100
Sinoe	37	37	37	100	100
Liberia	869	869	869	100	100

869(100%)
Health
facilities
reported
IDSR data

93 (100%)
Health
districts
reported
IDSR data

869(100%)
Health
facilities
reported
timely IDSR
data

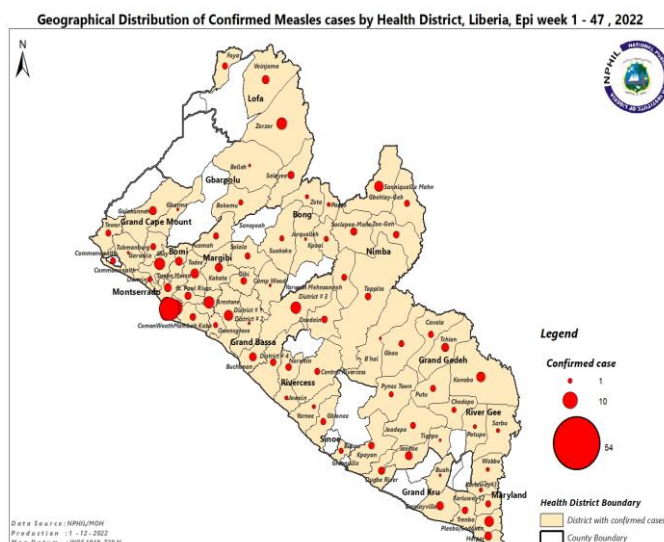
- ♦ The national target for weekly IDSR reporting is 80%. Health facility timeliness is monitored at the health district level
- ♦ All counties submitted weekly IDSR reports to the national level on time

Legend: ≥80 <80

Vaccine-Preventable Diseases

Measles

- ✍ Fifty (50) suspected cases were reported: Montserrado (14), Nimba (9), Grand Cape Mount (7), Maryland (7), Margibi (6), Grand Bassa (3), Bomi (2), Bong (1), and Lofa (1), Counties
- ✍ Three (3) specimens collected and pending testing
- ✍ Vaccination status among suspected cases
 - Vaccinated: (24) 48%
 - Not vaccinated: (19) 38%
 - Unknown: (7) 14%
- ✍ Age distribution among suspected cases
 - < 5 years: (25) 50%
 - ≥5 years: (25) 50%
- ✍ Cumulatively, eight thousand three hundred ninety-seven (8,397) suspected cases have been reported including 84 deaths
 - (7,813) 93% confirmed:
 - ✓ Laboratory confirmed: (488/7,813) 6%
 - ✓ Clinically compatible: (580/7,813) 7%
 - ✓ Epidemiologically linked: (6,745/7,813) 86%
 - Non-measles discarded: 584
 - ✓ 58 tested positive for Rubella
- ✍ Proportion of samples collected: (1,346/8,397) 16%
- ✍ Proportion of samples tested: (1,072/1,346) 80%
- ✍ CFR: (84/7,813) 1.1%



Outbreak

Measles: (Situation update from 13th December 2021- 27th November 2022)

Montserrado County: Commonwealth, Bushrod, Somalia Drive, St. Paul, Central Monrovia, Todee, and Careysburg Districts

- ✍ Fourteen (14) new cases were reported from Bushrod (8), Todee (4), and Commonwealth (2) Districts
- ✍ A total of 4,211 cases have been confirmed including sixty-five (65) deaths
 - Median age 6 (1month-59years)
 - Vaccinated - (2,025/4,211) 48%
 - Not Vaccinated- (2,100/4,211) 51%
- ✍ CFR (65/4,211) 1.5%

Bong County: Suakoko, Jorquelleh, Salala, and Kokoyah Districts (Situation update from 20th December 2021- 27th November 2022)

- ✍ No new case was reported
- ✍ A total of 363 cases have been confirmed including two (2) deaths
 - Median age 8 (1 month - 38 years)
 - Vaccinated - (161/363) 44%
 - Not vaccinated - (200/363) 55%
 - CFR (2/363) 0.5%

Lofa County: Voinjama, Foyah, Zorzor, and Salayea Districts (Situation update from 21st January- 27th November 2022)

- ✍ One (1) new case was reported from Voinjama District
- ✍ A total of 182 cases have been confirmed
 - Median age: 10 (2 months-46years)
 - Vaccinated: (166/182) 91%



Liberia IDSR Epidemiology Bulletin

Epi-week 47 (November 21-27, 2022)

- Not vaccinated: (16/182) 9%

Nimba County: Gbehlay-Geh, Sacleapea-Mah, Zoe-Geh, Tappita, Yarwin Mehnsonnoh, and Sanniquellie-Mah Districts (Situation update from 20th January-27th November, 2022).

👉 Nine (9) new cases were reported from Sanniquellie-Mah (4), Tappita (2) Sacleapea-Mal (2), and Gbehlay-Geh (1), Districts

👉 A total of 761 cases have been confirmed including one death

- Median age 7 (2 months- 48years)
- Vaccinated: (183/761) 24%
- Not Vaccinated: (577/761) 75.8%
- CFR (1/761) 0.1%

Maryland County: Harper, Karluway II, and Pleebo Districts (Situation update from 1st February- 27th November 2022)

👉 Seven (7) new cases were reported from Karluway II (5), and Pleebo (2) District

👉 A total of 309 cases have been confirmed

- Median age 7 (7 months-48 years)
- Vaccinated: (37/309) 12%
- Not Vaccinated: (272/309) 88%

Grand Bassa County: District #1, District #2, District #3 A&B, and Buchanan Districts (Situation update from 22nd April -27th November 2022)

👉 Three (3) new cases were reported from Buchanan District

👉 A total of 715 cases have been confirmed including 7 deaths

- Median age 7 (1 month-45 years)
- Vaccinated: (293/715) 41%
- Not Vaccinated: (415/715) 58%
- CFR (7/715) 1%

Bomi County: Klay, Senjeh, and Suehn Mecca Districts (Situation update from 14th March-27th November 2022)

👉 One (1) new case was reported from Senjeh District

👉 A total of 72 cases have been confirmed including 5 deaths

- Median age 7 (1 month-48 year)
- Vaccinated: (47/72) 65%
- Not Vaccinated: (20/72) 28%
- CFR (5/72) 7%

Grand Kru: Barclayville and Dorbor Districts (Situation update from 14th March – 27th November 2022)

👉 No new case was reported

👉 A total of 147 cases have been confirmed

- Median age 9 (53 months-18 years)
- Vaccinated: (93/147) 63%
- Not Vaccinated: (54/147) 37%

Rivercess: Doedain and Jowein Districts (Situation update from 16th March – 27th November 2022)

👉 No new case was reported

👉 A total of 76 confirmed cases have been confirmed including 1 death

- Median age 5 (6 months -36 years)
- Vaccinated: (38/76) 50%
- Not Vaccinated: (37/76) 49%
- CFR: (1/76) 1%



Liberia IDSR Epidemiology Bulletin

Epi-week 47 (November 21-27, 2022)

Margibi County: Firestone, Gibi, Kakata, and Mamba Kaba Districts (Situation update from 21st February–27th November 2022)

- 📁 Six (6) new cases were reported from Gibi (2), Kakata (2), Firestone (1), and Mamba Kaba (1) Districts
- 📁 A total of 574 cases have been confirmed
 - Median age 6 (4 months - 67 years)
 - Vaccinated: (292/574) 51%
 - Not Vaccinated: (282/574) 49%

Grand Cape Mount County: Gola Konneh District (Situation update from 10th March –27th November 2022)

- 📁 No new case was reported
- 📁 A total of 117 cases have been confirmed including 3 deaths
 - Median age 12 (2 months – 45 years)
 - Vaccinated: (101/117) 86%
 - Not Vaccinated: (13/117) 11%
 - CFR: (3/117) 3%

Grand Gedeh County: Tchien, Konobo, B'hai, and Gbao Districts (Situation update from 10th March–27th November 2022)

- 📁 No new case was reported
- 📁 A total of 133 cases have been confirmed
 - Median age 6 (6 months-35 years)
 - Vaccinated (98/133) 74%
 - Not Vaccinated: (35/133) 26%

Sinoe: Gblonee, Dugbeh River, Kpanyan, Jaedae, and Jedepo Districts (Situation update from 19th May – 27th November 2022)

- 📁 No new case was reported
- 📁 A total of 143 cases have been confirmed
 - Median age 6 (2 months-38 years)
 - Vaccinated: (130/143) 91%
 - Not Vaccinated (13/143) 9%

Public Health Response

I Coordination

- 📁 Ongoing monitoring of measles surveillance data with the provision of feedback to relevant stakeholders and developmental partners
- 📁 Measles case studies ongoing with support from AFENET/CDC-Liberia
- 📁 MSF in collaboration with NPHIL and MOH jointly conducted an assessment of treatment Capacity and Surveillance for measles in Bomi County from November 7th - 11th, 2022

II. Epidemiological Surveillance

- 📁 Active case search and line listing of cases ongoing

III. Case Management

- 📁 Isolation and treatment of cases ongoing

IV. Immunization

- 📁 Routine immunization intensified in

V. Laboratory

- 📁 Four hundred eighty-eight (488) cases have been confirmed by the laboratory the 15 counties



Liberia IDSR Epidemiology Bulletin

Epi-week 47 (November 21-27, 2022)

VI. Risk Communication and Community Engagement

- Community engagement and health education continue in affected and surrounding communities

VII. Challenges

- Lacked essential medications and medical supplies for case management
- Delay lab results from NPHRL

Next steps

- Specimen collection kit stock out in Nimba Count
- NPHIL/partners to procure essential drugs for case management
- Develop national Measles preparedness and response guide.
- Develop and validate the national Measles and Rubella Surveillance guide.
- Develop and validate Measles SOPs.

Continue social mobilization

Acute Flaccid Paralysis (AFP)

- Four cases reported from Grand Cape Mount, Lofa, Maryland and Nimba Counties
- Four specimens were collected: 3 shipped and 1 pending shipment
- Cumulatively, one hundred-six (106) cases have been reported
 - 105 specimens collected
 - 86 tested and 19 pending testing
 - 70 negative
 - 16 NPENT

Neonatal Tetanus

- zero case reported
- Cumulatively, forty-nine (49) clinically diagnosed cases reported

Influenza-Like Illnesses

Coronavirus Disease (COVID-19)

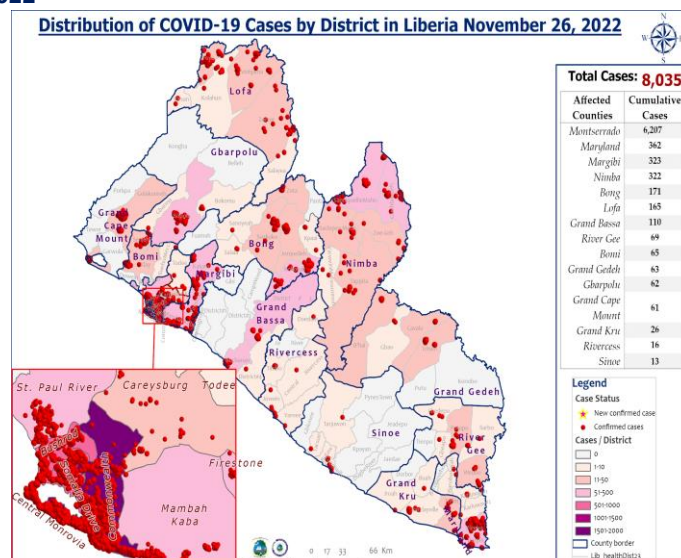
Outbreak

- Two (2) new confirmed cases were reported from Montserrado County
- A total of one thousand one hundred sixteen (1,116) confirmed cases have been reported since epi week 1
- Cumulatively, eight thousand thirty-five (8,035) confirmed cases, including 294 deaths
 - 601 healthcare workers
- A total of 17,827 contacts have been generated
 - 1,772 healthcare workers

Public Health Actions

- IMS coordination meeting ongoing.
- Surveillance activities including active case search and case investigation ongoing in the affected counties using WHO interim guidelines
- Case management ongoing for confirmed cases

Figure 2: Geographical Distribution of Laboratory Confirmed COVID-19 Cases by Health Districts, Liberia, as of November 21-27, 2022





Liberia IDSR Epidemiology Bulletin

Epi-week 47 (November 21-27, 2022)

✍ Compulsory testing among outgoing travelers as required by the country of destination ongoing

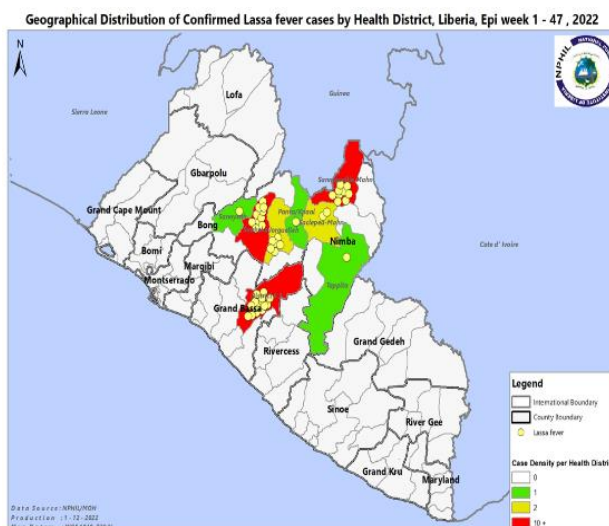
Influenza Like Illnesses

- ✍ Zero case reported
- ✍ Cumulatively, seventy-two (72) cases have been reported and pending testing

Viral Hemorrhagic Diseases

Lassa fever

- ✍ One (1) suspected case reported from Grand Bassa County
- ✍ Specimen collected and tested negative
- ✍ Cumulatively, one hundred eighty-three (183) suspected cases have been reported including 32 deaths
 - Sixty-seven (67) confirmed cases were recorded including 22 deaths
 - One hundred ten (110) negatives
 - Case Fatality Rate: (22/67) 33%
 - Proportion of suspected cases with sample collected (182/183) 99%
 - Proportion of suspected cases with sample tested (177/182) 97%
 - 3 specimens rejected (inadequate specimen, wrong packaging, wrong collection tube)
 - 1 not collected



Outbreak

Lassa fever disease: (Sitrep update as of November 27, 2022)

- ✍ Two new confirmed cases that were reported in week 46
- ✍ One hundred eight (108) contacts under 21 days' follow-up
- ✍ Cumulatively, sixty-seven (67) laboratory-confirmed cases including 22 deaths reported (CFR=33%)

Nimba County: Sanniquellie-Mah District

- ✍ One new confirmed case was reported in week 46
 - A 40-year-old male from Gbesiella Community, Ganta City, Sanniquellie-Mah District
 - Onset of symptom was November 18, 2022 and presented with fever > 38.5°C, joint pain, chest pain, stomach pain, and generalized weakness which lasted for 3 days.
 - He sought treatment at Ganta United Methodist Hospital on November 21, 2022, suspected of Lassa fever, and isolated on the same day.
 - Specimen was collected on November 21, 2022 and send to National Public Health Reference Laboratory on November 22, 2022.
 - Specimen was tested Lassa fever positive on November 25, 2022 and result released on the same day.
 - While in isolation the case expired on November 21, 2022. No ribavirin was administered
 - A total of 15 contacts including 10 healthcare workers line listed from the confirmed case
- ✍ Cumulative confirmed cases: Seventeen (17)
 - CFR (11/17) 65%
- ✍ Districts with confirmed cases since this year:
 - Sanniquellie-Mah: 13 cases (9 deaths)



Liberia IDSR Epidemiology Bulletin

Epi-week 47 (November 21-27, 2022)

- Sacleapea-Mah: 3 cases (1 death)
- Tappita: 1 case (dead)

👉 Cumulatively, 294 contacts including 187 HCWs have been generated since this year

- Fifty-eight (58) contacts currently under follow-up

Public Health Measures

👉 NPHIL and MOH providing technical support to the county

- Health workers and visitors are encouraged to enhance IPC practices by regular washing of hands

River Gee County: Putopo District

👉 One new confirmed case was reported in week 46

- A 45-year-old male from Tartuken Gbeapo Community, Putopo District
- Onset of symptom was November 13, 2022, and presented with fever $> 38.5^{\circ}\text{C}$, severe weakness, general body pain, and bleeding from the anus for 3 consistent days
- He sought treatment at Fish Town Hospital on November 16, 2022, suspected of Lassa fever, and isolated on the same day. The specimen was collected on November 16, 2022, and sent to National Public Health Reference Laboratory on November 17, 2022.
- Specimen was tested Lassa fever positive on November 25, 2022, and the result released on the same day.
- While in isolation the case expired on November 19, 2022. No ribavirin was administered
- According to a relative of the deceased, he had been living in Gbonos town, Sanoyeah district, Bong County but moved to Tartuken community (mining town) Gbeapo district, River Gee County three months ago to do business. The relative also confirmed that the deceased regularly visits Gbonos town because there is where his family resides. The deceased just returned from Bong county on November 5, 2022, with some goods for his shop.
- A total of 14 contacts including 5 healthcare workers line listed from the confirmed case

👉 Cumulative confirmed case: One

- CFR (1/1) 100%

👉 Districts with confirmed cases since this year:

- Putopo: 1 case (dead)

👉 Cumulatively, 14 contacts including 5 HCWs have been generated since this year

- All contacts currently under follow-up

Public Health Measures

👉 Infection Prevention Control

- Infection prevention control actively heighten at the health facility
- Ensure adherence of IPC practices by health care workers

👉 Case Management

- No case in isolation

👉 Surveillance

- All 14 contacts under monitoring and follow-up
- Active case search ongoing in the affected communities and health facilities

Grand Bassa County: District #3A&B

👉 No new confirmed case reported

👉 Cumulative confirmed cases: Twenty-six (26)

- CFR (6/26) 23%
- All reported from District #3 A&B

👉 Cumulatively, 119 contacts including two healthcare workers were generated since this year



Liberia IDSR Epidemiology Bulletin

Epi-week 47 (November 21-27, 2022)

- Twelve (12) contacts are currently under follow-up

Public Health Measures

- 📁 NPHIL and MOH providing technical support to the county
 - Health workers and visitors are encouraged to enhance IPC practices by regular washing of hands
 - Limited community engagement

Bong County: Suakoko District

- 📁 No new confirmed case reported
- 📁 Cumulative confirmed cases: Twenty-two (22)
 - CFR: (4/22) 18%
- 📁 Districts that have reported confirmed cases since this year:
 - Suakoko District: 17 cases (3 deaths)
 - Jorquellah District: 3 cases (1 death)
 - Sanoyea District: 1 case
 - Kpaai District: 1 case
- 📁 Cumulatively, 214 contacts including 129 HCWs have been recorded
 - Twenty-four (24) contacts currently under follow-up

Public Health Measures

- 📁 Risk communication interventions
 - Daily health talk in all health facilities on priority diseases
 - Airing of LF preventive and control messages
- 📁 Case Management
 - Confirmed case is isolated and being managed
- 📁 Surveillance
 - Active case search ongoing in the affected health districts
 - Heighten surveillance in all affected communities and districts
 - Daily situational reports are shared regularly at the national level

Yellow fever

- 📁 One (1) suspected case reported from Rivercess County
- 📁 Specimen collected and pending testing
- 📁 Cumulatively, eighty-six (86) suspected cases have been reported
 - Proportion of suspected cases with samples collected (77/86) 90%
 - Proportion of suspected cases with samples not collected (9/86) 10%
- 📁 Samples collected and tested
 - Tested negative (60/77) 78%
 - Pending testing (12/77) 16%
 - Not transported (5/77) 6%

Ebola Virus Disease

- 📁 Zero suspected case reported
- 📁 Cumulatively, one (1) suspected case has been reported

Diarrheal Diseases

Acute Bloody Diarrhea (Suspected Shigellosis)

- 📁 Five (5) cases were reported from Rivercess (2), Sinoe (2), and Grand Gedeh (1) Counties
- 📁 Two specimens were collected and pending testing
- 📁 Cumulatively, four hundred twenty-eight (428) suspected cases reported



Liberia IDSR Epidemiology Bulletin

Epi-week 47 (November 21-27, 2022)

- 📁 Two hundred fourteen (214) specimens were collected
- 📁 One hundred sixty-six (166) received by the lab
 - 11 rejected (inadequate specimen, wrong packaging)
 - 21 specimens discarded
 - 134 tested
 - 133 negative
 - 1 positive

Severe Acute Watery Diarrhea (Suspected Cholera)

- 📁 Eleven (11) cases were reported from Rivercess (5), Nimba (2), Grand Kru (1), Bomi (1), Lofa (1), and Maryland (1) Counties
- 📁 Three (3) specimens were collected and pending testing
- 📁 Cumulatively, three hundred fifty-four (354) suspected cases reported
 - Two hundred three (203) specimens collected
 - One hundred twenty-five (125) received by the lab
 - 5 rejected (inadequate specimen, wrong packaging, specimen not label)
 - 43 specimens discarded
 - 77 tested negative

Other Reportable Diseases

Animal bite (Human Exposure to Rabies)

- 📁 Fifty-three (53) animal bite cases were reported: Grand Kru (11), Maryland (6), Sinoe (6), Nimba (5), Bong (5), Montserrado (4), Margibi (3), Bomi (3), Rivercess (2), Grand Gedeh (2), Lofa (2), Gbarpolu (2), River Gee (1) and Grand Bassa (1) Counties
 - Persons received Post Exposure Prophylaxis (PEP) (17/53) 34%
- 📁 Cumulatively, one thousand nine hundred forty-six (1,946) animal bite cases reported
 - Dog bites account for 99.9%
 - Snake bite account for 0.1%
 - 1-4 doses (PEP) administered to (378/1,946) 19% of patients

Public Health Actions

- 📁 Ongoing monitoring and follow-up of cases
- 📁 Quarantined (6/53) 10% of suspected rabid dogs

Meningitis

- 📁 One (1) suspected case reported from Lofa County
- 📁 Specimen was collected and pending testing
- 📁 Cumulatively, thirty-two (32) suspected cases reported with one (1) confirmed
 - Proportion of suspected cases with samples collected (18/32) 56%
 - Proportion of suspected cases with samples not collected (14/32) 44 %
 - Proportion of sample tested (13/18) 72%
 - Tested negative (12/13) 92%
 - Pending testing (4/32) 13%

Monkeypox

- 📁 One (1) suspected case was reported from Rivercess County
- 📁 Specimen was collected and pending testing
- 📁 Cumulatively, fifty-six (56) suspected cases reported with three (3) confirmed



Liberia IDSR Epidemiology Bulletin

Epi-week 47 (November 21-27, 2022)

Events of Public Health Importance

Maternal Mortality

- 👉 Seven (7) deaths were reported from Montserrado (5), Maryland (1), and Bong (1) Counties
- 👉 Reported causes: Prolong labor (1), obstructed labor (1), Eclampsia (1), Postpartum hemorrhage (1), and pending review (3)
- 👉 Reported sites:
 - Health facility: (6) 86% and community (1) 14%
- 👉 Cumulatively, two hundred sixty (260) deaths have been reported
 - Proportion of deaths reviewed (49/260) 19%
 - Proportion of community deaths (26/260) 10%
 - Proportion of community deaths reviewed: (8/26) 31%

Neonatal Mortality

- 👉 Twelve (12) deaths were reported: Montserrado (9), Grand Kru (1), Bong (1), and Bomi (1) Counties
- 👉 Reported causes: Birth asphyxia (8), and neonatal sepsis (4),
- 👉 Reported sites:
 - Health facility: (12) 100%
- 👉 Cumulatively, seven hundred twelve (712) deaths have been reported
 - The proportion of deaths reviewed (79/712) 11%
 - Proportion of community deaths (32/712) 5%
 - Proportion of deaths reviewed from the community (8/32) 25%

Adverse Events Following Immunization (AEFI)/Adverse Drug Reaction (ADR)

- 👉 Three (3) cases were reported: Margibi (2), and Nimba (1) Counties
- 👉 Related vaccine:
 - COVID-19 (2/3) 67%
 - Measles (1/3) 33%
- 👉 Cumulatively, five hundred fifty-eight (558) events were reported with (396/558) 71% related to COVID-19
- 👉 Proportion of COVID-19 vaccine
 - J&J vaccine – (283/396) 71%
 - AstraZeneca – (6/396) 2%
 - Pfizer – (107/396) 27%
- 👉 Proportion of other vaccine-related events – (162/558) 29%

Public Health Actions

- 👉 All events were investigated, categorized as non-serious AEFI, and symptomatically treated
- 👉 Active case search and community engagement ongoing



Liberia IDSR Epidemiology Bulletin

Epi-week 47 (November 21-27, 2022)

Border Surveillance Update

✎ A total of 5,437 travelers were recorded for the week with incoming travelers accounting for 52% (2,824/5,437)

Table 2: Border activity at the PoE for Incoming and Outgoing Travelers, Liberia, Epi week 47, 2022

Type of Ports	Point of Entry	Weekly total	Arrival	Departure	Total travelers with YB	Yellow Book Damage	Card Replaced	Travelers Vaccinated against YF & Issued book	Alerts detected/ Verified	COVID-19 Reactive	Evidence of COVID-19 vaccination card/certificate
Airport	James S. Paynes	98	52	46	98	0	0	0	0	0	80
	Robert Int'l Airport	3927	2065	1862	3900	20	0	7	0	0	3914
Seaport	Freeport of Monrovia	162	81	81	162	0	0	0	0	0	162
	Buchanan Port	96	48	48	96	0	0	0	0	0	96
Land Crossing	Bo Water Side	634	316	318	600	24	0	10	0	0	509
	Ganta	136	86	50	97	18	21	0	0	0	72
	Yekepa	180	92	88	171	9	0	0	0	0	80
	Loguatu	204	84	120	188	10	6	0	0	0	98
Total		5,437	2,824	2,613	5,312	81	27	17	0	0	5,011

Note: Yellow book issue for both arrival and departure; Vaccination coverage for both arrival and departure

Public Health Measures

National level

- ✎ Ongoing CEBS training in Maryland County
- ✎ Operational Activity
 - Continued support for operational activities ongoing

County-level

✎ Surveillance

- Publication of situational reports
- Active case search ongoing in affected and surrounding communities

✎ Case Management

- Administration of PEP and ribavirin
- Management of measles cases ongoing

Appendix

Summary of Immediately Reportable Diseases, Conditions, and Events by County

			Bomi	Bong	Gbarpolu	Grand Bassa	Grand Cape Mount	Grand Gedeh	Grand Kru	Lofa	Margibi	Maryland	Montserrado	Nimba	Rivercess	River Gee	Sinoe	Total Weekly	Cumulative Reported	Cumulative Lab-confirmed	
No. of Expected Health District			4	9	5	8	5	6	5	6	4	6	7	6	6	6	10	93			
No. of Health District Reported			4	9	5	8	5	6	5	6	4	6	7	6	6	6	10	93			
Vaccine Preventable Diseases	Acute Flaccid Paralysis (Suspected Polio)	A	0	0	0	0	1	0	0	1	0	1	0	1	0	0	0	4	106	0	
		D	0	0	0	0	0	0	0	0	0	0	0	0	0	0	0	0	0	0	
	Measles	A	2	1	0	3	7	0	0	1	6	7	14	9	0	0	0	50	8,397	488	
		D	0	0	0	0	0	0	0	0	0	0	0	0	0	0	0	0	84	0	
	Neonatal Tetanus	A	0	0	0	0	0	0	0	0	0	0	0	0	0	0	0	0	49	0	
		D	0	0	0	0	0	0	0	0	0	0	0	0	0	0	0	0	3	0	
	Yellow fever	A	0	0	0	0	0	0	0	0	0	0	0	0	1	0	0	1	86	0	
		D	0	0	0	0	0	0	0	0	0	0	0	0	0	0	0	0	0	0	
	Viral Hemorrhagic Fe	Dengue fever	A	0	0	0	0	0	0	0	0	0	0	0	0	0	0	0	0	0	0
			D	0	0	0	0	0	0	0	0	0	0	0	0	0	0	0	0	1	0
Ebola Virus Disease		A	0	0	0	0	0	0	0	0	0	0	0	0	0	0	0	0	0	0	
		D	0	0	0	0	0	0	0	0	0	0	0	0	0	0	0	0	1	0	
Lassa fever	A	0	0	0	1	0	0	0	0	0	0	0	0	0	0	0	0	1	183	67	
	D	0	0	0	0	0	0	0	0	0	0	0	0	0	0	0	0	0	22	20	
Influenza-Like Illness	COVID-19	A	0	0	0	0	0	0	0	0	0	0	2	0	0	0	0	2	8,035	8	
		D	0	0	0	0	0	0	0	0	0	0	0	0	0	0	0	0	0	294	
	Influenza Like Illnesses	A	0	0	0	0	0	0	0	0	0	0	0	0	0	0	0	0	72	0	
		D	0	0	0	0	0	0	0	0	0	0	0	0	0	0	0	0	0	0	
Diarrheal Disease	Acute Bloody Diarrhoea (Shigellosis)	A	0	0	0	0	0	1	0	0	0	0	0	0	2	0	2	5	428	1	
		D	0	0	0	0	0	0	0	0	0	0	0	0	0	0	0	0	0	0	
	Severe Acute Watery Diarrhoea (Cholera)	A	1	0	0	0	0	0	1	1	0	1	0	2	5	0	0	11	354	0	
		D	0	0	0	0	0	0	0	0	0	0	0	0	0	0	0	0	0	0	
Events of Public Health	Maternal Mortality	D	0	1	0	0	0	0	0	0	0	1	5	0	0	0	0	7	260		
	Neonatal Mortality	D	1	0	0	0	0	0	1	1	0	1	0	2	0	5	0	11	712		
	Adverse Events Following Immunization (AEFI)	A	0	0	0	0	0	0	0	0	2	0	0	1	0	0	0	3	558	0	
		D	0	0	0	0	0	0	0	0	0	0	0	0	0	0	0	0	0	0	
	Unexplained Cluster of Health Events/Disease	A	0	0	0	0	0	0	0	0	0	0	0	0	0	0	0	0	0	0	
		D	0	0	0	0	0	0	0	0	0	0	0	0	0	0	0	0	0	0	
Other Reportable Diseases	Monkeypox	A	0	0	0	0	0	0	0	0	0	0	0	0	1	0	0	1	56	2	
		D	0	0	0	0	0	0	0	0	0	0	0	0	0	0	0	0	0	0	
	Tuberculosis	A	0	0	0	0	0	0	0	0	0	0	0	0	0	0	0	0	0	0	
		D	0	0	0	0	0	0	0	0	0	0	0	0	0	0	0	0	0	0	
	Human Exposure to Rabies (Suspected Human)	A	3	5	2	1	0	2	11	2	3	6	4	5	2	1	6	53	1,946	0	
		D	0	0	0	0	0	0	0	0	0	0	0	0	0	0	0	0	1	0	
	Meningitis	A	0	0	0	0	0	0	0	1	0	0	0	0	0	0	0	1	32	1	
		D	0	0	0	0	0	0	0	0	0	0	0	0	0	0	0	0	0	0	
	Unexplained Cluster of deaths	A	0	0	0	0	0	0	0	0	0	0	0	0	0	0	0	0	0	0	
		D	0	0	0	0	0	0	0	0	0	0	0	0	0	0	0	0	0	0	
Neglected Tropical Diseases	Buruli Ulcer	A	0	0	0	0	0	0	0	0	0	0	0	0	0	0	0	0	0	0	
		D	0	0	0	0	0	0	0	0	0	0	0	0	0	0	0	0	0	0	
	Yaws	A	0	0	0	0	0	0	0	0	0	0	0	0	0	0	0	0	0	0	
		D	0	0	0	0	0	0	0	0	0	0	0	0	0	0	0	0	0	0	
TOTAL			7	7	2	5	8	3	13	7	11	17	25	20	11	6	8	150	21386	881	

D = Dead A = Alive

Notes

- 👉 **Completeness** refers to the proportion of expected weekly IDSR reports received (target: $\geq 80\%$)
- 👉 **Timeliness** refers to the proportion of expected weekly IDSR reports received by the next level on time (target: $\geq 80\%$). The time requirement for weekly IDSR reports:
 - Health facility - required on or before 5:00 pm every Saturday to the district level
 - Health district - required on or before 5:00 pm every Sunday to the county level
 - County - required on or before 5:00 pm every Monday to the national level
- 👉 **Non-polio AFP rate** is the proportion of non-polio AFP cases per 100,000 among the estimated population under 15 years of age in 2017 (annual target: $\geq 2/100,000$)
- 👉 **Non-measles febrile rash illness rate** refers to the proportion of Negative measles cases per 100,000 population
- 👉 **Annualized maternal mortality rate** refers to the maternal mortality rate of a given period less than one year and it is the number of maternal deaths per 100,000 live births
- 👉 **Annualized neonatal mortality rate** refers to the neonatal mortality ratio of a given period less than one year and it is the number of neonatal deaths per 1,000 live births
- 👉 **Epi-linked** refers to any suspected case that has not had a specimen taken for serologic confirmation but is linked to a laboratory confirmed case
- 👉 **Confirmed case** refers to a case whose specimen has been tested positive or reactive upon laboratory testing, or has been classified as confirmed by either epidemiologic linkage with a confirmed case, or clinical compatibility with the disease or condition

Epidemiological bulletin published with support from WHO and CDC

For comments or questions, please contact

Ralph W. Jetoh, MD, MPH

Director

Infectious Disease and Epidemiology Division

National Public Health Institute of Liberia

Republic of Liberia

Email: ralphica2000@gmail.com

Phone: +231 886526388/777372655

Website: www.nphil.gov.lr

National Public Health Institute of Liberia (NPHIL)

MISSION

To prevent and control public health threats by promoting healthy outcomes and serving as a source of knowledge

VISION

A center of excellence to create health outcomes for Liberians through a strong preventive health system and expertise

EDITORIAL TEAM

DIDE / NPHIL

A. N. Mianah
I. P. Pewu
T. O. Yeabah
J. S. Kokro
E. Dwalu
A.B. Corvah
G. B. Williams
S. K. Zayzay
L. W. Colee
M. Tegli
T. L. Hall
S. L. Flomo
M. S. Quiah
C. T. Yeah
L. K. Seepoe
J. O. Abel
P. J. Thomas
H. M. Sherman
M.D. Vaye
N. K. Dovillie
A. Coker
S. Nuwolo

**Ministry of Health
WHO Liberia Office**

Data sources

Data and information is provided by the fifteen County Surveillance Officers and National Public Health Reference Laboratory via regular weekly reports, telephone calls and email exchanges. Situations are evolving and dynamic therefore numbers stated are subject to change.